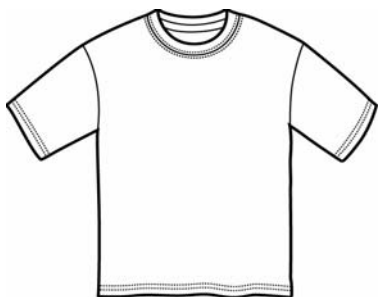


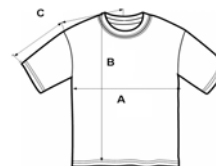


## STYLE 2000

Ultra Cotton Adult T-Shirt  
205 g/m<sup>2</sup>, 100% Cotton Preshrunk



- 100% cotton preshrunk jersey knit
- 205 g/m<sup>2</sup> (195 g/m<sup>2</sup> in White)
- Seamless twin needle 7/8" collar
- Seamless twin needle collar
- Taped neck and shoulders
- Twin needle sleeve and bottom hems
- Quarter-turned to eliminate centre crease
- Available in S - 3XL
- S - 2XL 72 pieces per pack
- 3XL 36 pieces per pack
- 60 colours
- 4 colours to 3XL
- **304 SKU's**



### SPECS 2000

	S	M	L	XL	2XL	3XL	Tol.
Width/inches (A)	18	20	22	24	26	28	'+/- 0.75
Width/cm	45.72	50.80	55.88	60.96	66.04	71.12	+/- 1.91
Length/inches (B)	28	29	30	31	32	33	+/- 1
Length/cm	71.12	73.66	76.20	78.74	81.28	83.82	+/- 2.54
CB Sleeve/inches (C)	16.5	18	19.5	21	22.5	24	+/- 0.75
CB Sleeve/cm	41.91	45.72	49.53	53.34	57.15	60.96	+/- 1.91

### AVAILABLE COLOURS

COLOUR NAME	CODE	SIZES	COLOUR NAME	CODE	SIZES	COLOUR NAME	CODE	SIZES
Ash Grey*	093H	S - 3XL	Ice Grey	023C	S - 2XL	Pistachio	168C	S - 2XL
Azalea	071C	S - 2XL	Indigo Blue	080C	S - 2XL	Prairie Dust	067C	S - 2XL
Black	036C	S - 3XL	Iris	056C	S - 2XL	Purple	081C	S - 2XL
Blue Dusk	076C	S - 2XL	Irish Green	167C	S - 2XL	Red	040C	S - 2XL
Camel	197C	S - 2XL	Jade Dome	029C	S - 2XL	Royal	051C	S - 2XL
Cardinal Red	011C	S - 2XL	Kelly Green	017C	S - 2XL	Safety Green**	188C	S - 2XL
Carolina Blue	109C	S - 2XL	Kiwi	186C	S - 2XL	Safety Orange**	193C	S - 2XL
Cedar	008C	S - 2XL	Light Blue	069C	S - 2XL	Sand	038C	S - 2XL
Charcoal	042C	S - 2XL	Light Pink	020C	S - 2XL	Sapphire	026C	S - 2XL
Cherry Red	194C	S - 2XL	Lime	012C	S - 2XL	Serene Green	004C	S - 2XL
Chestnut	084C	S - 2XL	Maroon	083C	S - 2XL	Sky	187C	S - 2XL
Daisy	098C	S - 2XL	Metro Blue	078C	S - 2XL	Sport Grey*	095H	S - 2XL
Dark Chocolate	105C	S - 2XL	Military Green	106C	S - 2XL	Stone Blue	009C	S - 2XL
Dark Heather*	108C	S - 2XL	Natural	031N	S - 2XL	Tan	091C	S - 2XL
Forest Green	033C	S - 2XL	Navy	032C	S - 3XL	Tangerine	035C	S - 2XL
Gold	024C	S - 2XL	Old Gold	222C	S - 2XL	Texas Orange	025C	S - 2XL
Heather Cardinal*	169C	S - 2XL	Olive	039C	S - 2XL	Vegas Gold	019C	S - 2XL
Heather Navy*	170C	S - 2XL	Orange	037C	S - 2XL	Violet	087C	S - 2XL
Heliconia	010C	S - 2XL	Orchid	191C	S - 2XL	White	030N	S - 3XL
Honey	189C	S - 2XL	Paprika	190C	S - 2XL	Yellow Haze	003C	S - 2XL

**N.B.:**

Ash Grey - 99% Cotton, 1% Polyester	Heather Navy - 50% Cotton, 50% Polyester
Sport Grey - 90% Cotton, 10% Polyester	Safety Green - 50% Cotton, 50% Polyester
Dark Heather - 50% Cotton, 50% Polyester	Safety Orange - 50% Cotton, 50% Polyester
Heather Cardinal - 50% Cotton, 50% Polyester	

\* Contains % of polyester

^ Compliant with ANSI / ISEA 107 High Visibility Standards

\* All weights indicated relate to colours only. White being +/-6% lighter.

**Changes for 2011**

Add 3 colours Heather Cardinal, Heather Navy & Old Gold S - 2XL

Plus 15 SKU's

Delete 1 colour Oceana S - 2XL

Less 5 SKU's

Net Plus 10 SKU's

**NEW!**

**Delete**